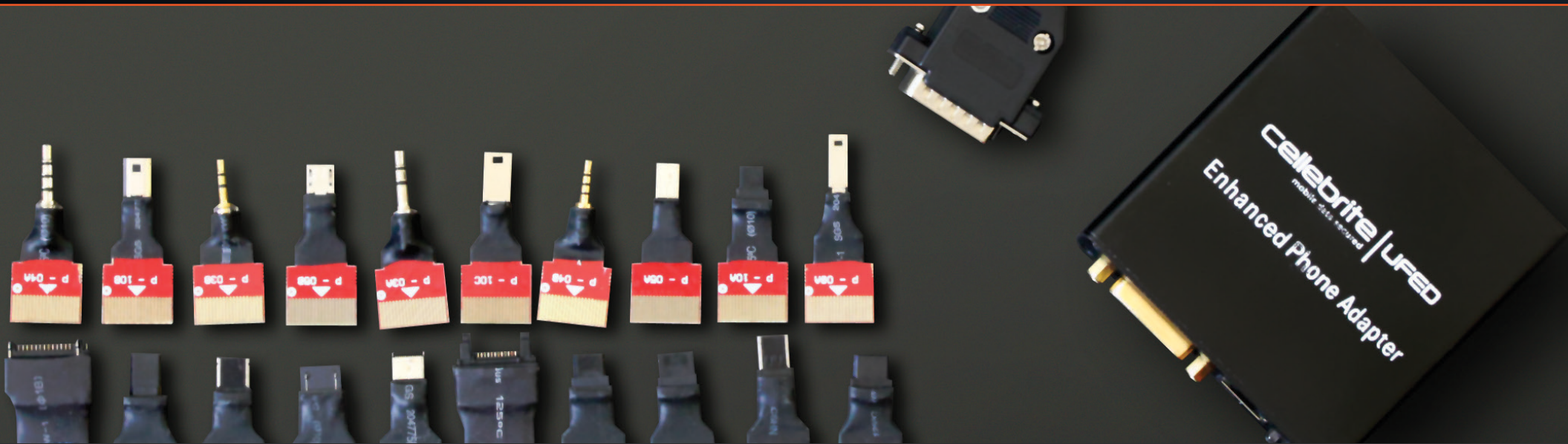


UFED CHINEX

Enhanced Phone Adapter



Quick Start Guide

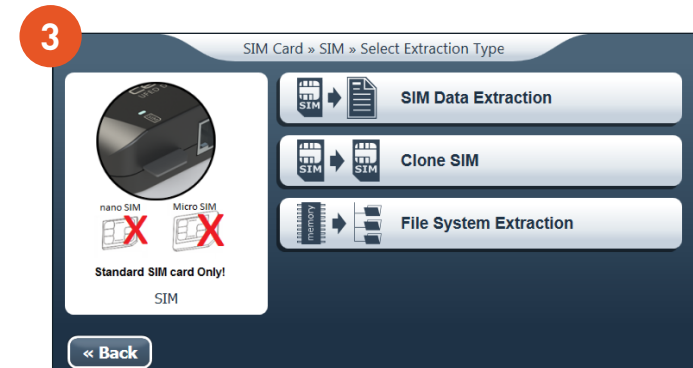
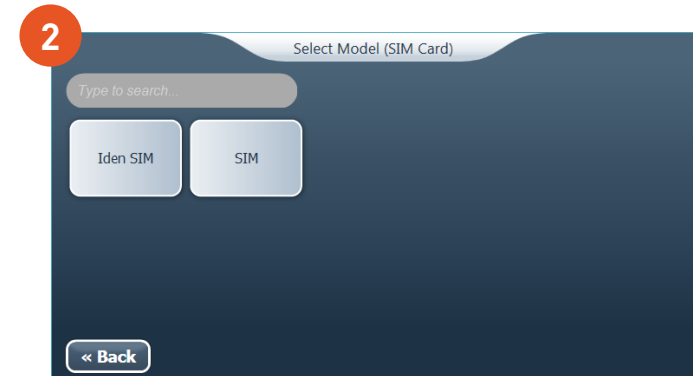
LOGICAL EXTRACTION OF CHINESE DEVICES

1. Select the **Vendor**. If the vendor or model is not known then select **Chinese Android** (if the device is running Android OS) or **Chinese Phones**.
2. Select the device **Model** (if known) or **Generic**.
3. Click **Logical Extraction**.
4. Select the connection type, **Cable** or **Bluetooth** (if applicable).
5. Select the relevant options in the **Phone's Memory** (if applicable) and click **Next**.
6. Select the **Content Types** that you want to extract from the device.
7. Click **Next**.
8. Connect the source device to the UFED device as instructed.
9. Click **Continue** to start the extraction.
10. At the end of the data extraction process, click Open preview to view an HTML report (UFED Touch only), click Open with UFED Analyzer to open the extraction in the UFED Physical/Logical Analyzer (UFED 4PC only), or click Additional Extractions to add additional extraction types.



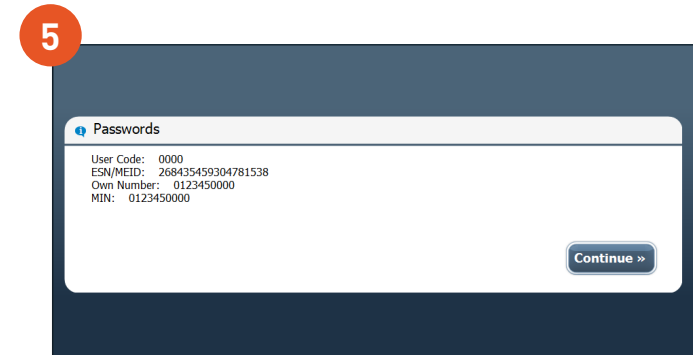
SIM DATA EXTRACTION OF CHINESE DEVICES

1. Select **SIM Card**.
2. Select the type of SIM for extraction – **Iden SIM** or **SIM**.
3. Select the **Extraction Type**.
4. Select the **Content Types** that you want to extract from the device.
5. Click **Next**. The Waiting for Device Adapter screen appears (UFED 4PC only).
6. Connect the UFED Device Adapter (if applicable).
7. Insert the SIM card into the SIM card slot.
NOTE: For Micro SIM and Nano SIM you need to use the Multi SIM adapter.
8. Click **Continue**. The extraction is performed.
9. At the end of the SIM extraction process, click Open with UFED Analyzer to open the extraction in the UFED Physical/Logical Analyzer (UFED 4PC only) or click Additional Extractions to add additional extraction types.



PASSWORD EXTRACTION OF CHINESE DEVICES

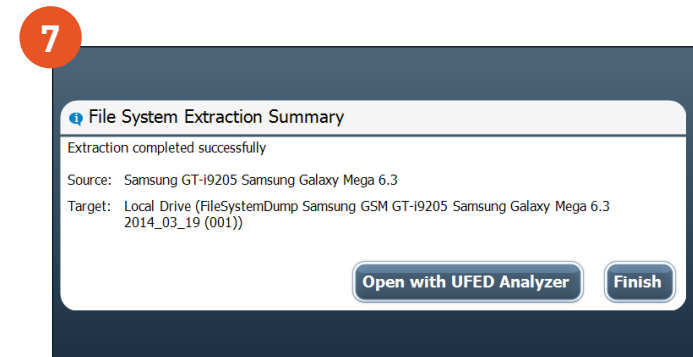
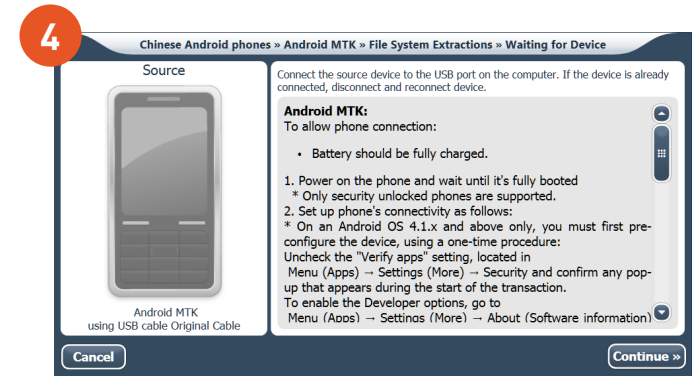
- Select the **Vendor**. If the vendor is unknown or the model is not found on the model list then select **Chinese Phones**.
- Select the device **Model** or **Generic MTK**.
- Click Password Extraction.
- Click **Display Only** or **Local Drive**. The Waiting for Device screen appears.
- Follow the on-screen instructions to connect the source device via cable.
- Click **Continue** to start the extraction. At the end of the extraction process, the password is displayed on the screen or stored on the local drive.
- Click **Continue** to display a summary of the extraction process.
NOTE: To view video tutorials, click the **Tutorials** button in the menu. For more information, refer to the UFED YouTube channel.



FILE SYSTEM EXTRACTION OF CHINESE DEVICES

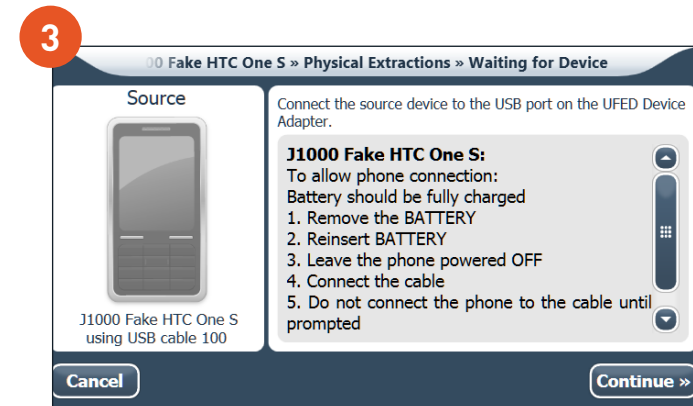
1. Select the **Vendor**. If the vendor is unknown or the model is not found on the model list then select [Chinese Android Phones](#) in the vendor list.
2. Select the device **Model** or a **Generic** option.
3. Click **File System Extraction**.
4. Click **Change target path** to select an alternate save location.
5. Click **Next**. The Waiting for Device screen appears.
6. Follow the on-screen instructions to connect the source device via cable.
7. Click **Continue** to start the extraction.
8. At the end of the data extraction process, click **Open with UFED Analyzer** to view the extracted data (UFED 4PC only) or click **Additional Extractions** to add additional extraction types.

NOTE: To view video **tutorials**, click the Tutorials button in the menu. For more information, refer to the UFED YouTube channel.



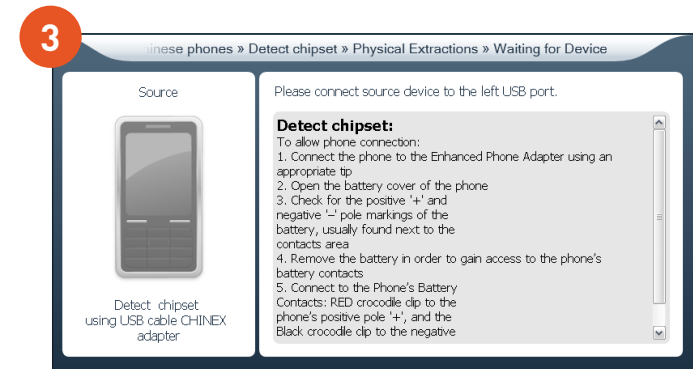
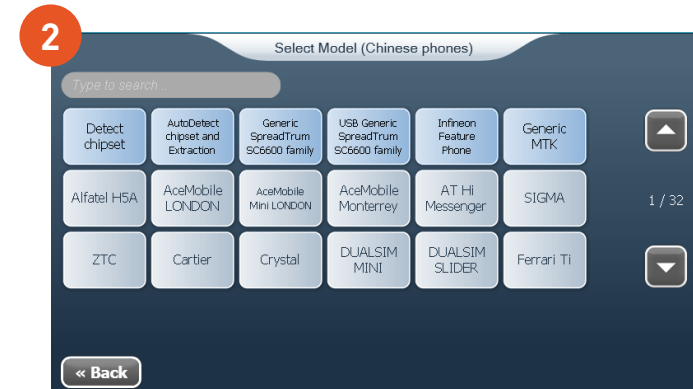
PHYSICAL EXTRACTION OF CHINESE DEVICES

1. Select the Vendor. If the vendor or model is not known then for:
 - Chinese Android devices select **Chinese Android Phones**, then select the model or a generic option, or
 - Non-Android devices select **Chinese Phones**, then select the device model or **AutoDetect Chipset and Extraction**.
2. Click **Physical Extraction**.
NOTE: User lock is automatically bypassed.
3. Select the mode – ADB or Boot Loader (if applicable).
4. Connect the source device via cable as instructed on screen.
5. Click **Continue** to start the extraction.
6. 5. At the end of the data extraction process, click **Open with UFED Analyzer** to view the extracted data (UFED 4PC only) or **click Additional Extractions** to add additional extraction types.
NOTE: To view video tutorials, click the Tutorials button in the menu. For more information, refer to the UFED YouTube channel.



DETECT CHIPSET OF CHINESE DEVICES

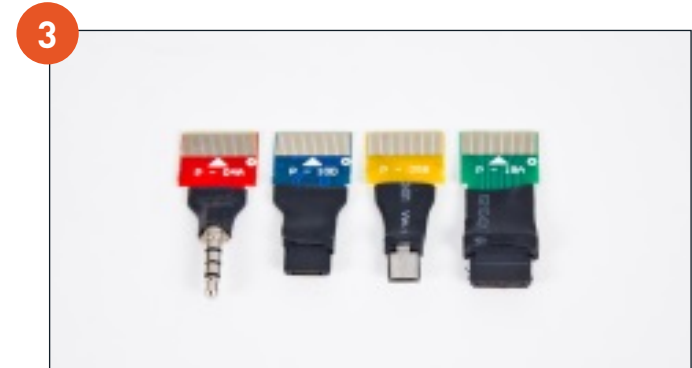
1. Select **Chinese Phones** on the vendor list.
2. Select **Detect chipset**.
3. Select Physical Extraction. The Waiting for Device screen appears.
4. Connect the source device via cable or the CHINEX kit as instructed (see CHINEX Instructions on the following pages).
5. Click **Continue**.
The chip detection is performed. Follow any on-screen instructions. The results are displayed at the end of the chipset detection.



UFED CHINEX QUICK REFERENCE GUIDE

Before You Begin

1. Locate the data port on your device.
NOTE: Some devices use the headphone connector for data. Make sure to find all possible tips that fit the device's connectors, including the headphone connector.
2. Three data cables are provided.
 - Two BLUE connectors provide the most commonly used tips. Try these common tips on your device. If one of these tips fits your device then use this connector.
 - One BLACK generic connector. When using the BLACK connector you will need to find the right tip from the kit that fits your device.
3. Connect the tip to the connector.
NOTE: A tip can be connected in both directions.



UFED CHINEX QUICK REFERENCE GUIDE - 2

Connecting to the device

1. Connect the tip at the end of the generic or adapter cable to the data port of the device.
2. Connect the other end of the cable to the Enhanced Phone Adapter.
3. **Connecting the Enhanced Phone Adapter (EPA) to the UFED**
Connect the supplied USB cable, to the EPA (using USB Type A port) and to your UFED device port (using the other end- USB Type B).



UFED CHINEX QUICK REFERENCE GUIDE - 3

Identifying the Device's Battery Contacts

1. Open the device's battery cover.
Locate the positive ('+') and negative ('-') pole markings of the device, usually found next to the contacts area.
Remove the battery to gain access to the device's battery contacts.

TIP: If the battery contacts are not clearly marked on the device's body, you can identify them by the pole markings on the battery. Use a multimeter to identify the positive and negative poles on an unmarked battery.

Connecting the Device's Battery Contacts

2. Connect the RED alligator clip to the device's positive pole ('+') and the BLACK alligator clip to the device's negative pole ('-').
Make sure that the clips are not touching each other – if the clips are touching, a beeping alarm will sound.



NOTES



Digital intelligence for a safer world

Digital data plays an increasingly important role in investigations and operations of all kinds. Making data accessible, collaborative and actionable is what Cellebrite does best. As the global leader in digital intelligence, and with more than 60,000 licenses deployed in 150 countries, we provide law enforcement, military and intelligence, and enterprise customers with the most complete, industry-proven range of solutions for digital forensics and digital analytics solutions in the field, in the lab and everywhere in between. By enabling access, sharing and analysis of digital data from mobile devices, social media, cloud, computer and other sources, Cellebrite products, solutions, services and training help customers build the strongest cases quickly, even in the most complex situations. As a result, Cellebrite is the preferred one-stop shop for digital intelligence solutions that make a safer world more possible every day.

To learn more, visit www.cellebrite.com

CORPORATE

Cellebrite
94 Shlomo Shmelzer Rd.
Petah Tikva 4970602
P.O.B 3925, Israel
Tel: +972 3 394 8000

USA

Cellebrite Inc.
7 Campus Dr. Suite 210
Parsippany, NJ 07054, USA
Tel: +1 201 848 8552

UK

Cellebrite UK
First Central 200
2 Lakeside Drive
Park Royal
London NW10 7FQ, United Kingdom
Tel: +44 20 3949 9521

GERMANY

Cellebrite GmbH
Herzog-Heinrich-Strasse 20,
80336 München, Germany
Tel: +49 (0) 89 2 15 45 37 18

APAC

Cellebrite Asia Pacific Pte. Ltd.
152 Beach Road
#19-06/08 Gateway East
Singapore 189721
Tel: +65 6438 6240

LATAM

Cellebrite Ltda.
Av. Engenheiro Luiz
Carlos Berrini, 550-12º
Andar Brooklin
04571-000 São Paulo, Brazil
Tel: +55 11 3216 3800

